

# RED IMPORTED FIRE ANT LIFE CYCLE



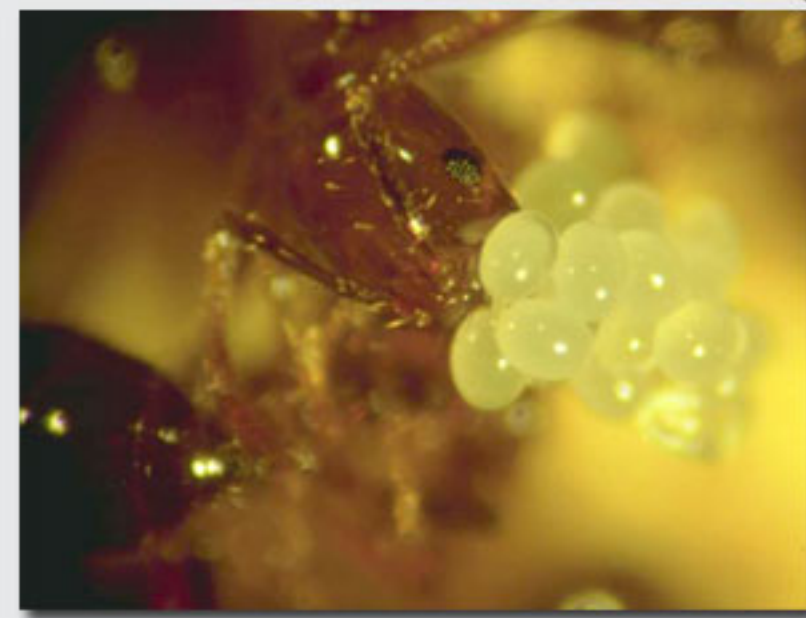
**ADULTS**

Both male and female adult reproductives are winged and mate in the air.

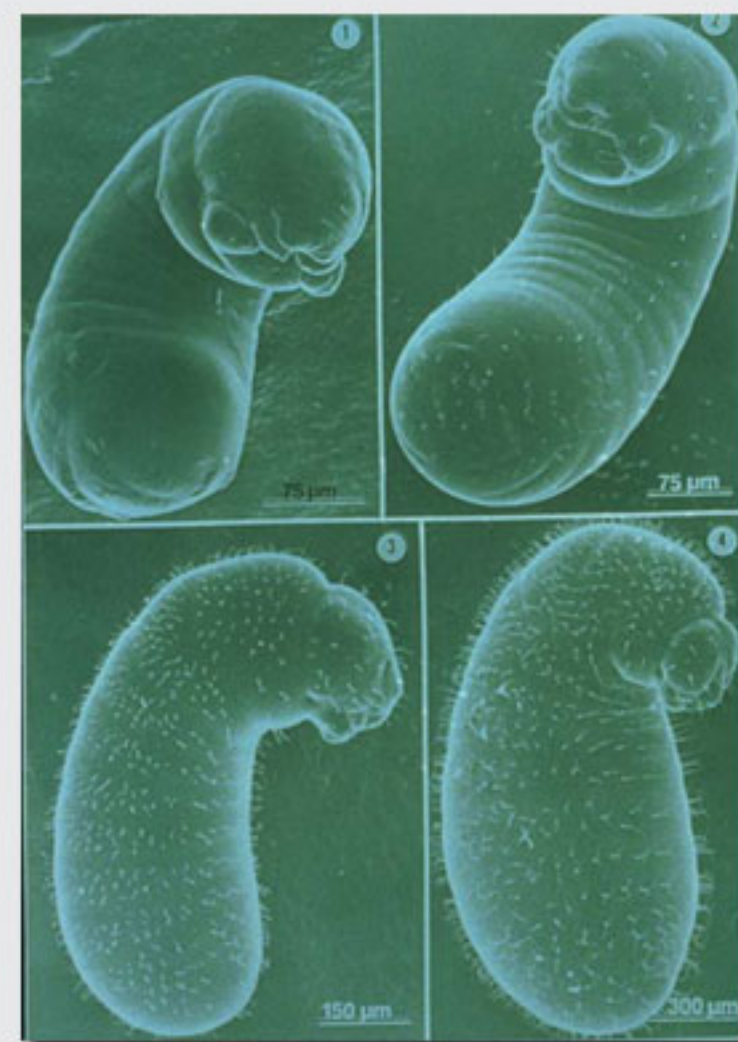


Red Imported Fire Ant worker adult

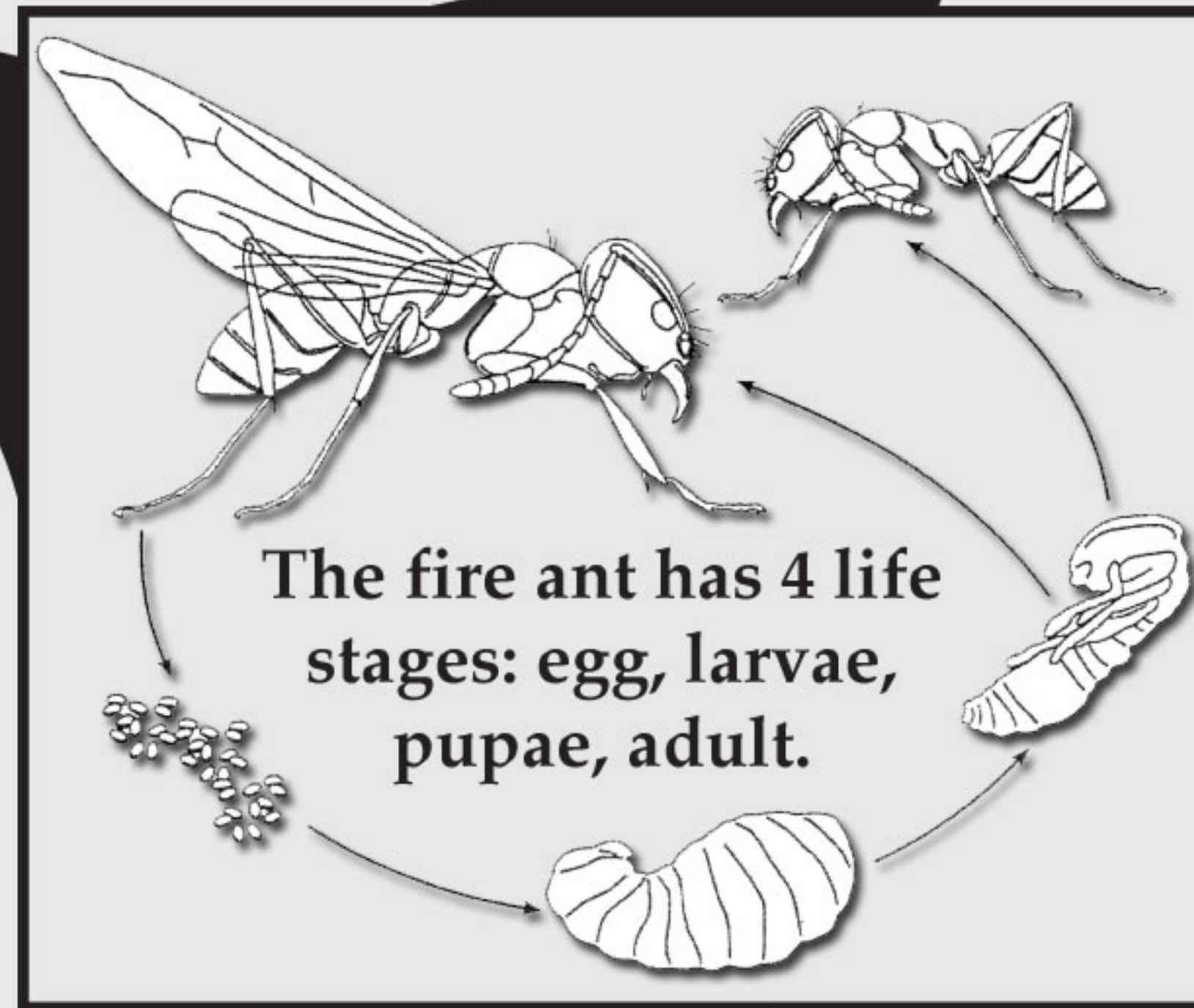
**EGGS**



Eggs found in the brood chamber of a mound. Eggs usually take 7-10 days to hatch.



Larvae molt four times over a 12-15 day period. The first three instars are fed regurgitated liquid food.



**3**

**PUPAE**

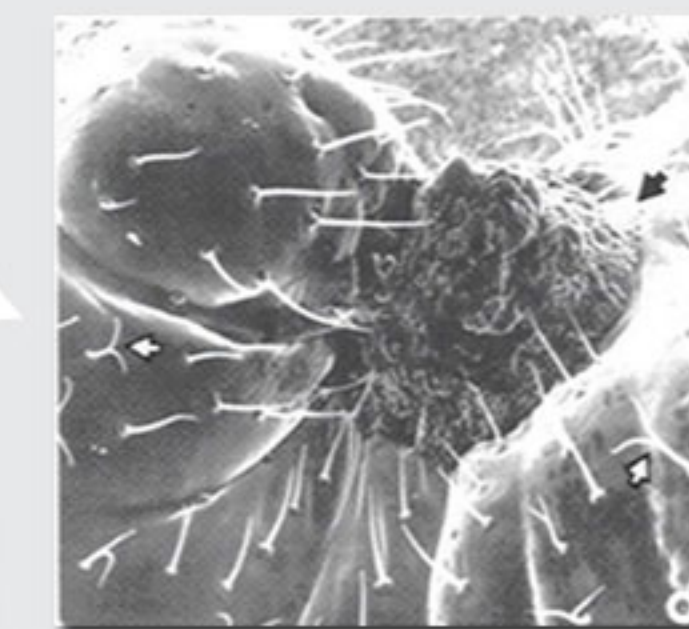


Pupae that will develop into different size workers and winged forms. Pupae take 9-16 days to develop.

**LARVAE**



Larval instars that will develop into different size workers.



The fourth instar is the only stage of fire ant able to digest solid food. The food is placed in a food basket just beneath the mouth and is digested externally.